

Lower ground floor

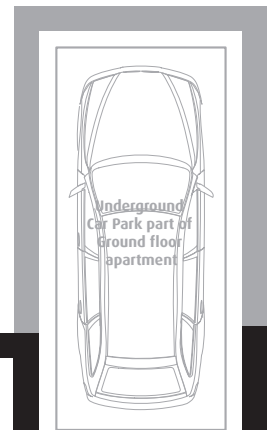
120 m² / 1,292 ft² *

2 bedrooms

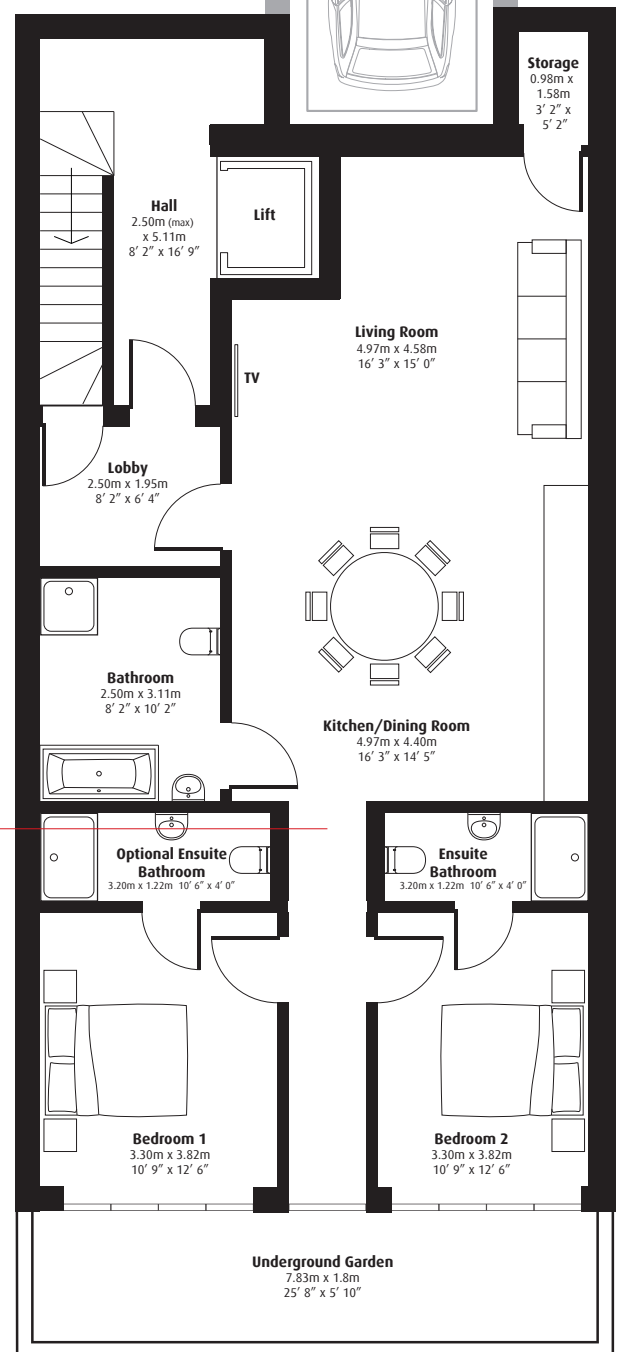
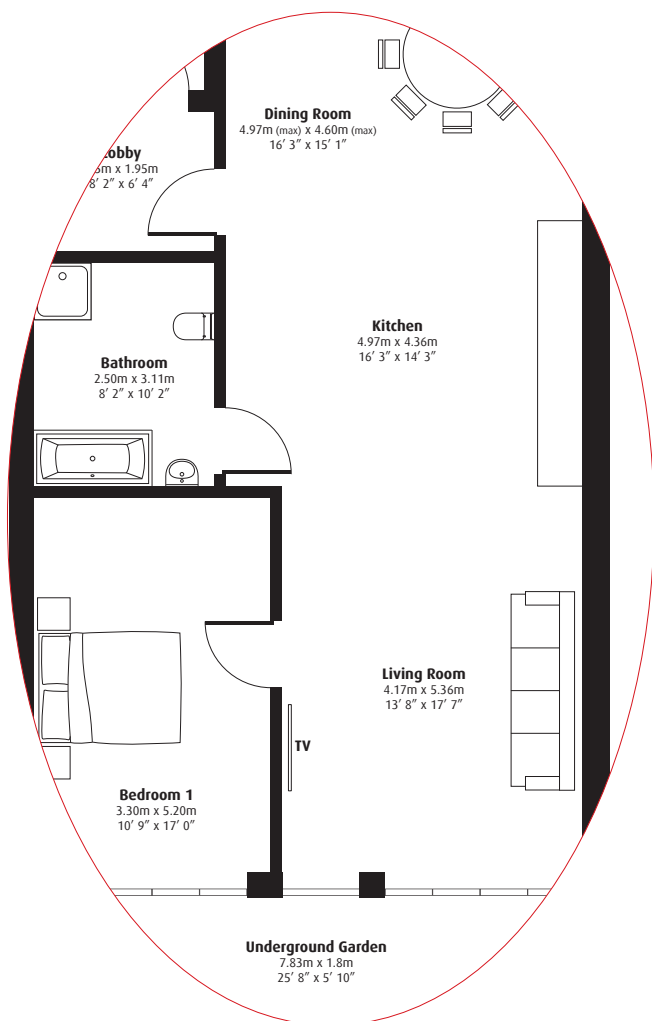
For context : The average size of a
3 bedroom new home is 91 m²

Source : Royal Institute of British Architects (RIBA)

Homewise Report - December 2015



Alternative room layout



All dimensions are approximate

Ground floor

126 m² / 1,356 ft² *

2/3 bedrooms

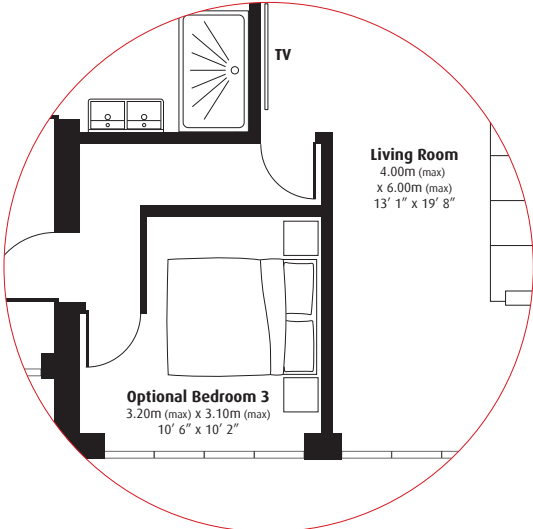
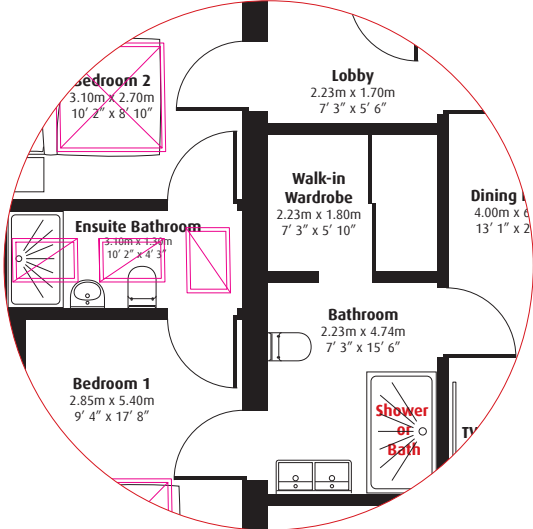
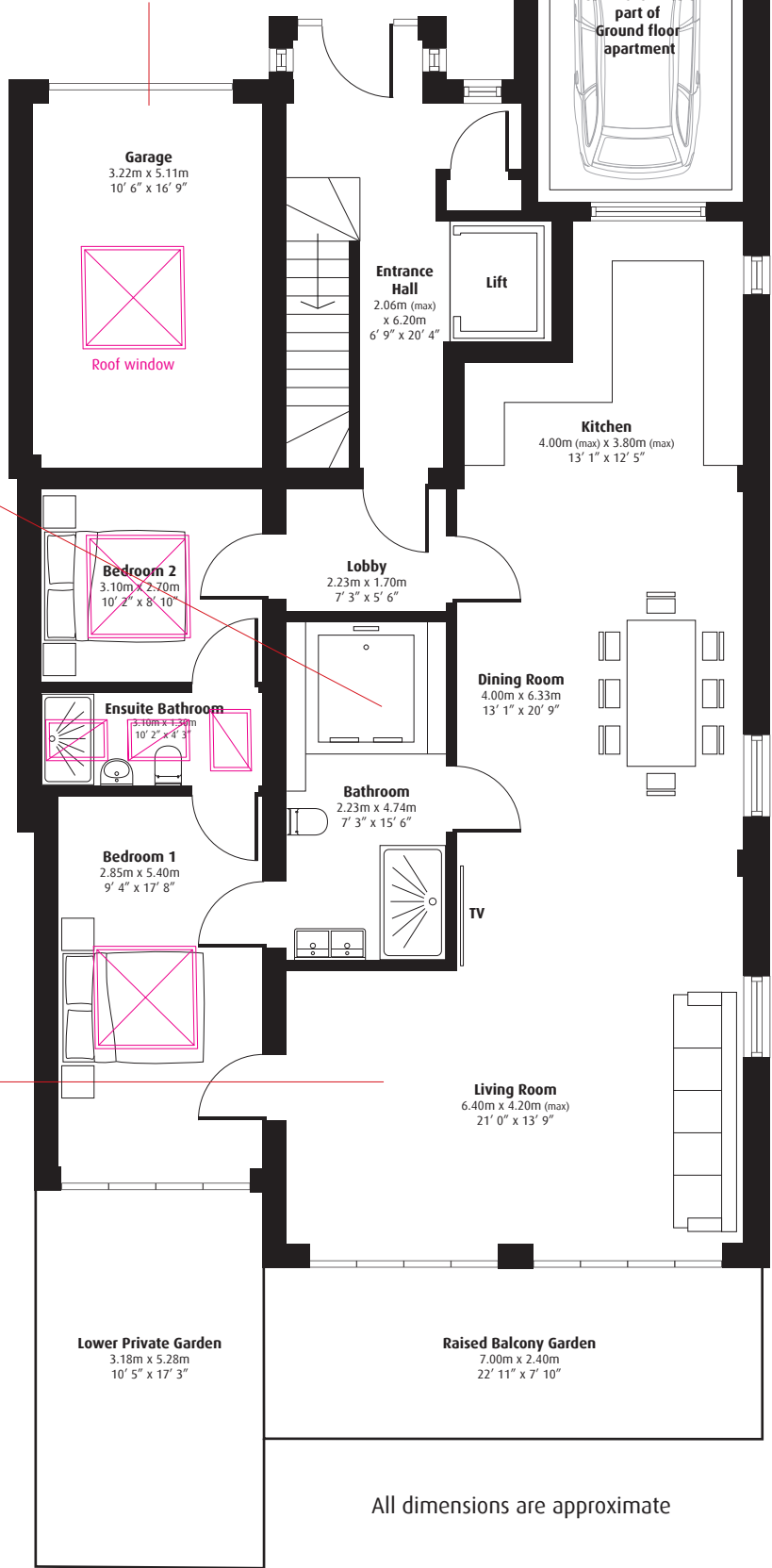
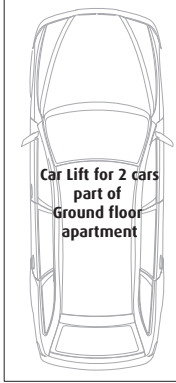
For context : The average size of a 3 bedroom new home is 91 m²

Source : Royal Institute of British Architects (RIBA)

Homewise Report - December 2015



The garage is optional with basement, first, or second floor apartments



Lower Private Garden
3.18m x 5.28m
10' 5" x 17' 3"

Raised Balcony Garden
7.00m x 2.40m
22' 11" x 7' 10"

All dimensions are approximate

First floor

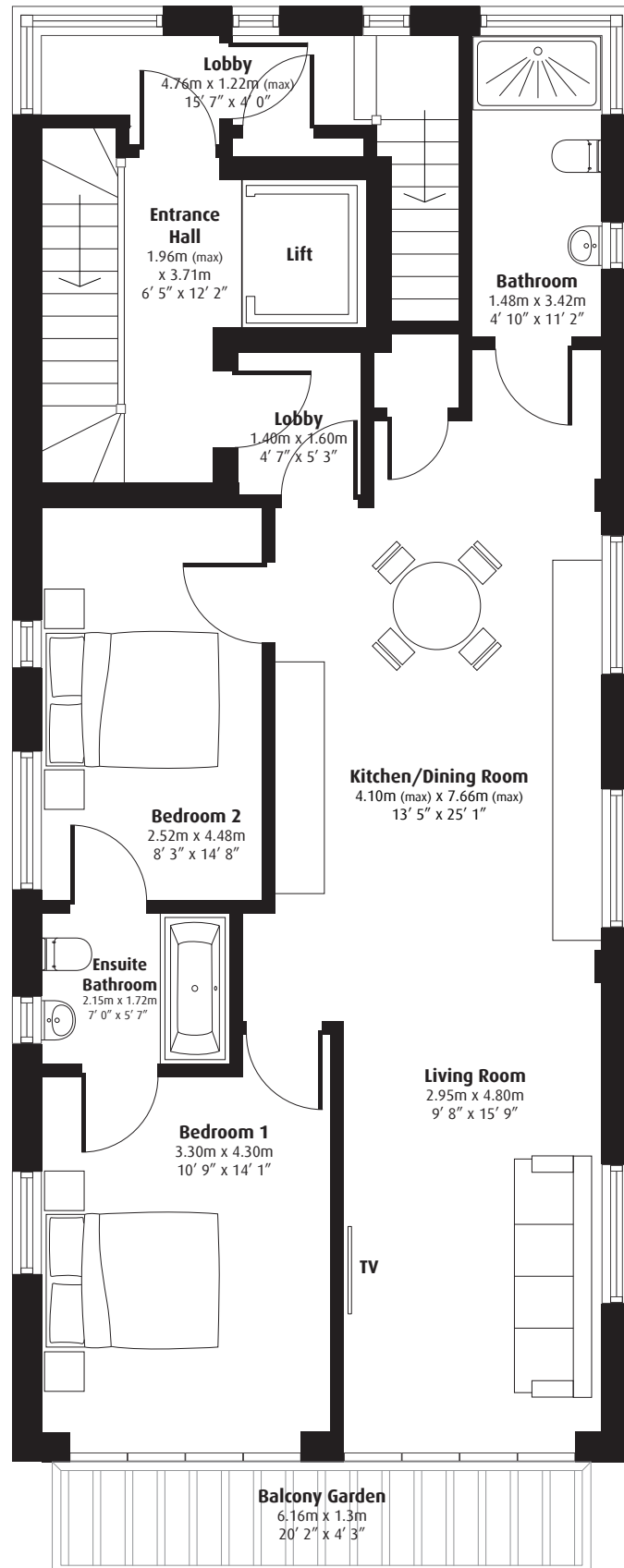
90 m² / 968 ft² *

2 bedrooms

For context : The average size of a
3 bedroom new home is 91 m²

Source : Royal Institute of British Architects (RIBA)

Homewise Report - December 2015



All dimensions are approximate

Penthouse

102 m² / 1,098 ft² *

1 bedroom

For context : The average size of a
3 bedroom new home is 91 m²

Source : Royal Institute of British Architects (RIBA)
Homewise Report - December 2015

Alternative room layout



All dimensions are approximate